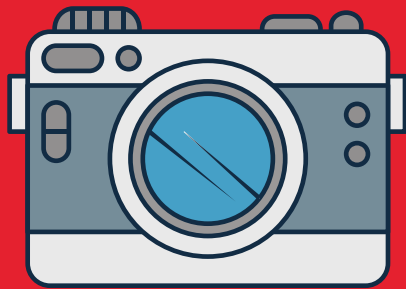


# 4-H Photography Day Camp

Age 9-18



**MAY  
22ND**  
**JUNE  
4TH**



**11:00AM**  
**Clay County**  
**Extension Office**

**JOIN US FOR 4-H PHOTOGRAPHY CAMP ON MAY 22ND AND JUNE 4TH AT 11:00A.M. WE WILL MEET AT THE CLAY COUNTY EXTENSION OFFICE ON BOTH DAYS AND TRAVEL TO VARIOUS LOCATIONS FOR PHOTO OPPORTUNITIES! PHOTOS WILL BE ENTERED IN THE 4-H PROJECT SHOWCASE JULY 18TH, AND GRAND CHAMP WINNERS WILL HAVE THE OPPORTUNITY TO ENTER PHOTOS IN THE KY STATE FAIR! CAMERAS AND PHOTOS WILL BE DUE BACK BY JULY 8TH.**

**You must call 598-2789 to register !**

**Cooperative  
Extension Service**

Agriculture and Natural Resources  
Family and Consumer Sciences  
4-H Youth Development  
Community and Economic Development

**MARTIN-GATTON COLLEGE OF AGRICULTURE, FOOD AND ENVIRONMENT**

Educational programs of Kentucky Cooperative Extension serve all people regardless of economic or social status and will not discriminate on the basis of race, color, ethnic origin, national origin, creed, religion, political belief, sex, sexual orientation, gender identity, gender expression, pregnancy, marital status, genetic information, age, veteran status, physical or mental disability or reprisal or retaliation for prior civil rights activity. Reasonable accommodation of disability may be available with prior notice. Program information may be made available in languages other than English.  
University of Kentucky, Kentucky State University, U.S. Department of Agriculture, and Kentucky Counties, Cooperating.  
Lexington, KY 40506



Disabilities  
accommodated  
with prior  
notification.