



Open Exhibits

Clay County Showcase
June 27-29, 2017
Clay County EXCEL Center
Manchester, Kentucky

Rules

Open classes are open to all exhibitors.

1. All entries **MUST** be registered on Tuesday, June 27th from 12:00 pm – 5:30 pm at the Clay County EXCEL Center. **Registration will close PROMPTLY at 5:30 pm.**
2. Judging will be done between 9:30 am – 12:00 p.m. on June 28th. Exhibits will be on display from 1:00 – 6:00 pm.
3. Exhibits will be on display June 29th from 9:00 am – 5:30 pm
4. Exhibits **must** be picked up on June 29th, between 4:00 – 5:30 pm. All food items not picked up will be thrown away.
5. Please consider purchasing a ticket for the Plate It Up Dinner. Plate It Up recipes will be prepared and served for dinner from 5:30 – 6:30 pm on June 29th. Tickets are \$10.00 and proceeds will go to 4-H Camp and Homemaker Ovarian Cancer Research.
6. Fruits, vegetables, foods are to be entered on white Styrofoam plates. Be sure baked food is well cooled before wrapping with clear plastic wrap (gallon size storage bags work well). Canned foods are to be exhibited in standard canning jars.
7. In each class, 1st, 2nd, 3rd or participation ribbons will be awarded. 4-H class ribbons will be awarded using the Danish system.
8. Labels will be provided at the time of registration.
9. Only one entry per person per division # will be allowed.
10. Clay County Cooperative Extension Service is not responsible for lost or damaged items.

Division I – Foods

- 100 – Plate of 5 biscuits
- 101 – Plate of 5 yeast rolls
- 102 – Plate of 5 cornbread muffins
- 103 – ½ loaf yeast bread
- 104 – ½ loaf any quick bread
- 105 – ½ loaf banana bread
- 106 – ½ loaf zucchini bread
- 107 – Plate of 5 muffins



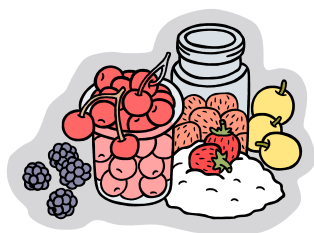
- 108 – Decorated cake, judging on decorating skill only (foam or cardboard may be substituted for cake)

- 110 - Plate of 5 cookies
- 111 – Plate of 5 pieces of peanut butter fudge
- 112 – Plate of 5 pieces of chocolate fudge
- 113 – Plate of 5 Brownies
- 114 – Peanut Butter Roll
- 115 – Pumpkin Roll
- 116 – Miscellaneous

Division II – Food Preservation

(preserved food should not be more than 2 years old)

- 200 – 1 jar tomatoes
- 201 – 1 jar tomato juice
- 202 – 1 jar green beans
- 203 – 1 jar corn
- 204 – 1 jar sauerkraut
- 205 – 1 jar sweet cucumber pickles
- 206 – 1 jar dill cucumber pickles
- 207 – 1 jar bread and butter pickles
- 209 – 1 jar beets
- 210 – 1 jar corn relish
- 211 – 1 jar pickled relish
- 212 – 1 jar apple jelly
- 213 – 1 jar grape jelly
- 214 – 1 jar blackberry jelly
- 215 – Peach Jelly
- 216 – Raspberry Jelly
- 217 – Plum Jelly
- 218 – 1 jar marmalade
- 219 – 1 jar strawberry jam
- 220 – 1 jar blackberry jam
- 221 – 1 jar raspberry jam
- 222 – 1 jar peach preserves
- 223 – 1 jar strawberry preserves
- 224 – 1 jar apple butter
- 225 – 1 jar salsa
- 226 – 1 jar miscellaneous
- 231 – Dried fruit
- 233 – Dried apples
- 235 – Dried Apples
- 236 – Dried vegetable
- 237 – Dried beans
- 241 – 1 jar canned peaches
- 242 – 1 jar canned blackberries
- 245 – 1 jar canned chutney
- 247 - Miscellaneous
- 248 – Hot peppers
- 249 – Banana peppers
- 250 – Sweet mixed peppers
- 255 – Greens
- 256 – Apples
- 257 – Chow Chow
- 258 – 1 jar canned spaghetti sauce
- 262 – Tomato Sauce



Division III – Hand Crafted Item

- 300 – Crocheted craft item
- 301 – Small crocheted article

- 302 – Medium crocheted article
- 303 – Large crocheted article
- 304 – Crocheted afghan
- 305 – Small knitted article
- 306 – Medium knitted article
- 307 – Large knitted article
- 308 - Knitted afghan
- 309 – Embroidered article
- 310 – Decorative pillow
- 311 – Pieced quilt – hand quilted
- 312 – Pieced quilt – machine quilted
- 313 – Appliquéd quilt – hand quilted
- 314 – Appliquéd quilt – machine quilted
- 315 – Tacked Quilt
- 316 – Other quilted item not listed above – hand quilted
- 317 – Other quilted item not listed above – machine quilted
- 318 – Needlepoint on plastic canvas
- 319 – Needlepoint on cloth canvas
- 320 – Cross Stitch on aida cloth – count 14 and under
- 321 – Cross Stitch on aida cloth – count 18-22
- 322 – Cross Stitch on specialty cloth
- 323 – Latch Hook
- 324 – No sew blanket
- 325 – No sew purse
- 326 – Miscellaneous

Division IV – Clothing

- 400 – Adult dress
- 401 – Youth Dress
- 402 – Formal wear
- 403 – Costume
- 404 – Embellished clothing (any article, purchased or hand-made, embellished with ribbons, beads, etc.)
- 405 – Handmade doll clothes
- 406 – Clothing accessories
- 407 – Miscellaneous

Division V – Arts and Crafts

- 500 – Nature craft
- 501 – Painted/decorated shirt
- 502 – Handmade jewelry
- 503 – Woodcraft – small
- 504 – Woodcraft - medium
- 505 – Woodcraft – large
- 506 – Miniature Carvings
- 507 – Winter decorations

- 508 – Christmas Ornament
- 509 – Spring decorations
- 510 – Summer decorations
- 511 – Fall decorations
- 512 – Handmade doll
- 513 – Stuffed animal
- 514 – Painting – oil on canvas
- 515 – Painting – acrylic on canvas
- 516 – Painting – watercolor on paper
- 517 – Painting - Pastels
- 519 – Drawing – black and white
- 520 – Drawing – color
- 521 – Drawing - pastel
- 522 – Recycled article
- 523 – Basketry (woven) small
- 524 – Basketry (woven) medium
- 525 – Basketry (woven) large
- 526 – Weaving – small
- 527 – Weaving – medium
- 528 – Weaving - large
- 529 – Ceramics – hand formed
- 530 – Ceramics – molded
- 531 – Ceramics – decorative
- 532 – Ceramics – decorative - small
- 533 – Mod Podge Item
- 534 – Scrapbooking (1 page)
- 535 – Leather item
- 537 – Stain Glass Item
- 538 – Pottery – Small
- 539 – Pottery – Medium
- 540 – Pottery - Large
- 541 – Miscellaneous

Division VI – Home Grown Fruits and Vegetables

- 600 – 3 yellow tomatoes
- 601 – 3 green tomatoes
- 602 – 3 red tomatoes
- 603 – Roma Tomatoes
- 604 – 3 red cherry tomatoes
- 605 - 3 yellow cherry tomatoes
- 606 – 12 pods white half runner beans
- 607 – 12 pods greasy beans
- 608 – 12 pods pole beans
- 609 – 12 pods bush beans
- 610 – 12 pods wax beans
- 611 – 3 beets
- 612 – 3 cucumbers
- 613 – 3 yellow cucumbers
- 614 – 3 pickling cucumbers
- 615 – 1 head of cabbage
- 616 – 1 head red cabbage



- 617 – 3 zucchini squash
- 618 – 3 summer squash
- 619 – 1 head broccoli
- 620 - 3 carrots
- 621 – 12 pods peas
- 622 – 3 bell peppers (red)
- 623 – 3 bell peppers (green)
- 624 – 3 bell peppers (yellow)
- 625 – 3 banana peppers
- 628 – 3 white potatoes
- 629 – 3 red potatoes
- 630 – 3 sweet potatoes
- 631 – 5 pods okra
- 632 – 3 onions (white)
- 633 – 3 onions (yellow)
- 634 – 3 onions (red)
- 635 – Tater Onions
- 636 – 6 radishes
- 637 – 1 eggplant
- 638 – 1 pumpkin
- 639 – 1 butternut squash
- 640 – Spaghetti Squash
- 641 – Gourds – small
- 642 – Gourds – medium
- 643 – Gourds - large
- 644 – Swiss chard
- 645 – Rhubarb
- 646 – 3 ears sweet corn (unhusked)
- 647 – 3 ears corn (unhusked)
- 650 - Mint
- 651 – 3 apples (red)
- 652 – 3 apples (yellow)
- 653 – 3 apples (green)
- 654 – 3 Pears
- 655 – 1 Watermelon
- 656 – 1 Cantaloupe

Division VII – Honey

- 700 – 1 quart jar light honey – extracted
- 701 – 1 quart jar light honey – with comb
- 702 – 1 quart jar dark honey – extracted
- 703 – 1 quart jar dark honey – with comb
- 704 – Miscellaneous

Division VIII – Specialty Farm Products

- 820 – Eggs – Brown
- 821 – Eggs – White
- 822 – Soap

Division IX – Flowers

- 900 – Annual Hanging Basket
- 901 – Hanging Basket
- 902 – House Plant (large)
- 903 – House Plant (medium)
- 904 – House Plant (small)
- 905 – African Violets
- 906 – Cactus
- 907 – Potted Annuals
- 908 – Potted Herbs
- 909 – Dish Garden
- 910 – Desert Dish Garden
- 911 - Miscellaneous



- 919 – Other blooming perennial (3 blooms)
- 920 - Lily
- 921 – Summer mix
- 922 – Miscellaneous

CUT SPECIMENS: (Bring your own vase)

- 912 – Rose
- 913 – Marigold (3 blooms, any color)
- 914 – Zinnia (3 blooms, any color)
- 915 – Dahlia
- 916 – Gladiolus (1 spike, any color)
- 917 – Mums (3 blooms, any color)
- 918 – Flowering shrub (3 blooms)



Division 6015 – 4-H

Horticulture

- 569 – House Plants
- 570 – Hanging Baskets
- 574 – Produce (Any size or type in display container-box or basket)
- 575 – Tomato (5 per plate) Must be ripe (red or yellow color only) cherry type
- 578 – Peppers - Hot (5 per plate)
- 579 – Peppers - Bell (5 per plate)
- 580 – Peppers - Sweet (5 per plate)
- 581 – Cucumbers - Slicing (5 per plate)
- 582 – Cucumbers -Pickling (5 per plate)
- 583 – Beans - Snap or Lima (12 per plate)
- 584 – Corn - Sweet (in the husk w/silks) (5 ears per plate)
- 585 – Cantaloupe (1 whole), **halved**
- 586 – Largest Tomato (by weight) Must be ripe (red or yellow color only)
- 587 – Largest Cabbage (by weight)
- 588 – Largest Pumpkin (by weight)
- 589 – Largest Watermelon (by weight)

Division 6025 – 4-H Wood Science

- 674 – Level I (Made from a kit)
- 675 – Level I (NOT from a kit)
- 676 – Level II (Made from a kit)
- 677 – Level II (NOT from a kit)

Division 6026 – 4-H Ecology Natural Resources

- 687 – 1st Year Project – (25-50 insects)
- 688 – 2nd Year Project – (50-100 insects/8 orders)

Division 6027 – 4-H Forestry

- 703 – Leaf Collection (10 leaves)
- 704 – Leaf Print Collection (10 leaves)
- 705 – Leaf Collection - 2nd Year (20 leaves)

Division 6028 – 4-H Geology

- 715 – 1st Year Geology (15 different specimens)
- 716 – 2nd Year Geology (25 Specimens)

NOTE: Please call the Extension Office at 598-2789 for more information on 4-H Arts & Crafts and the 4-H Photography categories.

Division 6029 – 4-H Arts & Crafts

Painting

- 727a.- Junior Acrylic Still Life
- 727b.- Senior Acrylic Still Life
- 728a – Junior Water Color
- 728b – Senior Water Color
- 729a – Junior Abstract
- 729b – Senior Abstract
- 731a – Junior Self Portrait - Using acrylic or watercolor paints.
- 731b – Senior Self Portrait – Same as Junior
- 733a – Junior Oil Painting
- 733b – Senior Oil Painting
- 734a – Junior Oil Landscape
- 734b – Senior Oil Painting

Drawing

- 745a – Junior Contour Drawing
- 745b – Senior Contour Drawing
- 746a – Junior Two Point Perspective
- 746b – Senior Two Point Perspective
- 747a – Junior Circular Shape Object
- 747b – Senior Circular Shape Object
- 748a – Junior Color Pencil
- 748b – Senior Color Pencil
- 749a – Junior Pen and Ink
- 749b – Senior Pen and Ink
- 750a – Junior Calligraphy
- 750b – Senior Calligraphy
- 751a – Junior Cartooning
- 751b – Senior Cartooning

Fiber Arts

- 752a – Junior Felted Wool Applique Mat
- 752b – Senior Felted Wool Applique Mat
- 754a – Junior Batik Fabric
- 754b – Senior Batik Fabric
- 755a – Junior Lap Loom Woven Place Mat
- 755b – Senior Lap Loom Woven Place Mat

Division 6030 – 4-H

Photography

- 764 – Fun With Shadows
- 767 - Bird's Eye View; 4 Photos: Lying on your stomach; Lying on your back, Leaning over, Bending Sideways
- 768 – Hat Tricks and Magic
- 769 – Photos can tell a Story
- 770 – Black and White – Shows texture, shape and composition
- 773 – Capture A Candid Photo
- 776 – Bits and Pieces
- 777 – Panoramas
- 778 – Reflections
- 780 – Say “Cheese”
- 786 – Single Black and White. Horticulture subject or activity
- 787 – Single Color. Horticulture subject or activity
- 788 – Sequence of 4 Photographs
- 789 – Horticulture collection – 6 photos

Division 6032 – 4-H Sewing

- 789 – Unit I – Jr. Clothing Option (shorts, pants or skirt with casing waistline)
- 790 – Unit I – Jr. Non-Clothing Option (Drawstring backpack, tote bag or laundry bag)
- 791 – Unit II – Jr. Clothing Option (Skirt, shorts, or pants w/ zipper & waistband/facing, etc)
- 798 – Jr. Non-Clothing Option – Put It All Together original design Wild things© tote bag & documentation
- 799 – Jr. Up Cycle It! – Item sewn from recycled/repurposed garments & documentation
- 800 – Sr. Let's Be Casual – Clothing Option (1-2 piece complete outfit)

Division 6033 – 4-H

Needlework

- 813 – Crochet: Item made of medium weight yarn and single or double crochet stitches
- 818 – Embroidery: Item using one type of embroidery
- 820 – Embroidery: Item of charted embroidery using large cross or snowflake stitches
- 824 – Knitting: Small/simple knitted item(s)
- 826 – Knitting: Larger/simple knitted item(s)
- 833 – Quilting: Quilted Mat (12”x12” finished)
- 834 – Quilting: Quilted Runner – machine tacked or hand tied (12”x36” finished size)

Division 6035 – 4-H Foods

- 841 – 3 Colossal Cookies
- 842 – 3 Brownies
- 843 – 3 Chocolate Chip Muffins
- 849 – 3 Scones – Cranberry or Raisin

Division 6039 – 4-H Home Environment

- 887 – Color Collage
- 888 – Texture Collage or Rubbing
- 889 – Transparent finish applied to small wood project
- 890 – Simple Cloth Item – Machine may be used but not required
- 891 – Wastebasket
- 892 – Bulletin Board
- 896 – Invitation and Thank You Letter/Note
- 898 – Table Setting
- 901 – Home Accessory Original/Adapted Design
- 902 – Heritage Item – Refinished/Restored or Made by 4H Member
- 903 – Decorative Problem – Purchased Article + Description and Before/After Picture
- 904 – Cloth Article (Home Improvement)

Division 6042 – Trends & Traditions

- 1010 – Junior Clover Photograph
- 1011 – Senior Clover Photograph
- 1020 – Junior Duct Tape Project
- 1021 – Senior Duct Tape Project
- 1040 – Junior Historical 4-H Poster
- 1041 – Senior Historical 4-H Poster
- 1050 – Junior Upcycling Project
- 1051 – Senior Upcycling Project
- 1060 – Junior 4-H Cake Decorating
- 1061 – Senior 4-H Cake Decorating
- 1070 – Junior 4-H General Decorating
- 1071 – Senior 4-H General Decorating

Website for classes & rules:

https://clay.ca.uky.edu/files/clay_county_extension_showcase_exhibits_2017_2.pdf

Cooperative Extension Service
Agriculture and Natural Resources
Family and Consumer Sciences
4-H Youth Development
Community and Economic Development

Educational programs of Kentucky Cooperative Extension serve all people regardless of economic or social status and will not discriminate on the basis of race, color, ethnic origin, national origin, creed, religion, political belief, sex, sexual orientation, gender identity, gender expression, pregnancy, marital status, genetic information, age, veteran status, or physical or mental disability. University of Kentucky, Kentucky State University, U.S. Department of Agriculture, and Kentucky Counties, Cooperating.
LEXINGTON, KY 40546



Disabilities
accommodated
with prior notification.