



EXTENSION EVENTS

How can I stay up-to-date?

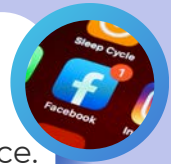
Monthly Newsletter

Call or email to be added to the monthly email list.



Facebook Page

"Like" our Facebook page - [Clay County Cooperative Extension Service](#).
Go to our page & check out events.



Webpage

Check out the county webpage at
<https://clay.ca.uky.edu>



PO Box 421 / 69 Jameson Rd | Manchester, KY 40962 | P: 606-598-2789 | F: 606-598-2695 | <https://clay.ca.uky.edu>

Cooperative Extension Service

Agriculture and Natural Resources
Family and Consumer Sciences
4-H Youth Development
Community and Economic Development

MARTIN-GATTON COLLEGE OF AGRICULTURE, FOOD AND ENVIRONMENT

Educational programs of Kentucky Cooperative Extension serve all people regardless of economic or social status and will not discriminate on the basis of race, color, ethnic origin, national origin, creed, religion, political belief, sex, sexual orientation, gender identity, gender expression, pregnancy, marital status, genetic information, age, veteran status, physical or mental disability or reprisal or retaliation for prior civil rights activity. Reasonable accommodation of disability may be available with prior notice. Program information may be made available in languages other than English.
University of Kentucky, Kentucky State University, U.S. Department of Agriculture, and Kentucky Counties, Cooperating.
Lexington, KY 40506



Disabilities
accommodated
with prior notification.



Family & Consumer Sciences

*Introducing Brandy Napier,
our new County Extension Agent for
Family & Consumer Sciences*

I am so excited to introduce myself as Clay County's new Extension Agent for Family & Consumer Sciences. Just a little professional and personal background on myself: Just out of high school, I began working as telemetry tech at what was then Manchester Memorial. After completing my bachelor's degree in health education at Eastern Kentucky University, I took a position with the Kentucky School Board's Association delivering substance use prevention education in local schools. I went on to work within Clay County's judicial system in Family Court for more than a decade. During that time, I was blessed to be able to complete a master's degree in psychology and have since been employed with the University of Kentucky in social service-related positions. On a more personal note, I am a lifelong resident of the Oneida area of Clay County. My husband, Jamie, and I live on the family farm on the banks of the South Fork of the Kentucky River, which is where we spend much of our time during the warmer months. Above all, I love to spend time with my family and dogs, but I also enjoy cooking, shopping for antiques, and tending to my overabundance of house plants. I am absolutely thrilled for the opportunity to serve my community in this new position.

*You're
Invited!*

Taco
Tuesday

Let's taco 'bout it!

 Cooperative
Extension Service

MEET & GREET LUNCH WITH
OUR NEW FCS AGENT!!!

MAY 14TH

11 AM - 1 PM

CLAY COUNTY EXTENSION OFFICE

The Clay County Homemakers would like to invite you to join us for tacos and "Taco to" our new FCS Agent!

An Equal Opportunity Organization




Create & Inspire Club

MAY 10TH

EXCEL

Create & Inspire is a new homemaker club being led by Lona Cornett that will meet on the 2nd Friday of each month from 10:00 AM - 5:00 PM. Club members will be able to work on their choice of enjoyable hobbies, whether it be quilting, painting, embroidery, or just whatever. Bring your project and join us for a creative and inspiring day! If you are not already a paid homemaker, dues are \$12.00 annually.

Call 598-2789 for
more information.

 Cooperative
Extension Service

Card Making Club

The Card Making Club meets the 2nd Tuesday of each month at 1 PM at the Clay County Extension Office. Would you like to learn how to make beautiful greeting cards? If, so, you will love this club! We always welcomes new members! Call 598-2789 for more information.



Homemaker Recipe Club

If you love cooking & trying new recipes, join our Homemaker Recipe Club! We will not meet in person, just call to be added to our mailing list! Once we have your contact information, you will receive 3 new recipes in the mail each month. Try these at home with your family & take pictures to share to let us know what you think! If you have already joined, be on the lookout for your May recipes!



Pins & Needles Homemaker Club

The Pins & Needles Club meets every 3rd Saturday at 10 AM at the EXCEL building beside McDonalds. This club always welcomes new members! Bring your materials and join us with your sewing projects. Don't know how to sew, no problem...we will teach you! Call 598-2789 for more information.



FCS & Homemaker Club Activities



Card Making Club

We learned new techniques for decorating greeting cards such as Embossing and much more during our March Card Making Club meeting. Thanks to Gail Voyles for leading this club every month and teaching us how to make beautiful greeting cards to share!



Pins & Needles

Members of our Pins & Needles Club meet once a month to work on individual sewing projects. If you would like to learn how to sew, we would love to teach you! Thanks to Laura Garrison for leading this wonderful club.



Savor the Flavor

Thanks to our special guest, Knox County FCS Agent Kelsee Dewees for stopping by again in April with another Savor the Flavor class! This time we learned all about herbs and made a fresh corn salad!



Are you interested in becoming a member of the Clay County Homemakers? Contact us at 598-2789. We can provide information about our current clubs and programs, as well as guidance in establishing new clubs. Homemaker dues are \$12.00 annually.



Honoring Irene Reid

Long time Extension Supporter & Clay County Homemaker Member



Irene will be missed!

Irene was an active member of her community and was passionately involved with the Clay County Extension Office, after all she was born into Extension. Her father, E.R. Sparks, was the County Agent from 1924-1941. Irene was a member of the Clay County Homemakers Club for over 50 years where she served several roles including Wilderness Trail Area President. Irene served the Clay County Extension Office as a 4-H Counselor and was the District Board Treasurer for more than 30 years. In 2001, Epsilon Sigma Phi presented her with the "State Friend" award in recognition of her public service and support of the UK Extension Service. In 2012, she was presented with an Appreciation Plaque for her exceptional care, time and devotion to the University of Kentucky and the Clay County Cooperative Extension Service.

Irene still called our office frequently to check up on us and to inquire about the hiring of a new FCS Agent. She always stayed in touch and we enjoyed hearing her brag about her beautiful great grandchildren which she absolutely adored! We always looked forward to her calls and those calls will be missed!





Agriculture/Natural Resources

Ashley Adkins

Ashley Adkins
Co. Extension Agent for
Agriculture/Natural Resources Ed.
Email: ashley.adkins@uky.edu

The Importance of Pollinators

Please join us for the Importance of Pollinators on May 2nd at 6:00 PM at the Clay County Extension Office. This month's topic will be Pollinator Garden Installation. We will have a potluck dinner, so bring your favorite dish and join us for a fun evening! Please call 598-2789 to register.

Clay County Community Farmers Market

The Clay County Community Farmers Market is Manchester's connection for locally grown farm products and area crafts. Opening day for 2024 will be May 4th from 9 AM-1:00 PM.

Pollinator Plant Sales

The Clay County Pollinator Plant Sales Program will be at the opening day of the Clay County Community Farmers Market on Saturday, May 4th from 9 AM-1:00 PM and will have native pollinator plants available for you to buy for your home pollinator garden!



BQCA

Beef Quality Care Assurance Certification - May 7th @ 6:00 PM

The Beef Quality Care Assurance (BQCA) Program is to maximize consumer confidence in and acceptance of beef by focusing the producer's attention to daily production practices that influence the safety, wholesomeness and quality of beef and beef products through the use of science, research and education initiatives. For those needing renewal or certification for CAIP please contact Clay County Cooperative Extension at 598-2789 to sign up for this training on May 7th @ 6:00 PM at the EXCEL center. Remember CAIP guidelines require that ALL beef applicants become Kentucky Beef Quality & Care Assurance (BQCA) certified before funding is received. The cost for BQCA is \$5.00.

The deadline for turning in CAIP receipts is May 10th. No receipts accepted after this date!

Clay County Beekeepers

The Clay County Beekeepers will meet on Thursday, May 23rd at 6:00 PM at the EXCEL Building. New members are always welcome. Come join us and see what the buzz is all about!



CLAY COUNTY COMMUNITY FARMERS MARKET



**SHOP
LOCAL**

**OPENING DAY
MAY 4TH 9AM-1PM**

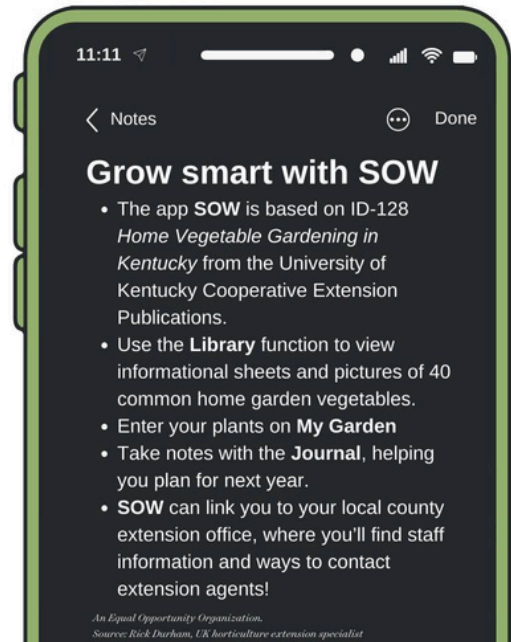
EXCEL BUILDING- 86 MUDDY GAP RD

ID-128

 Cooperative
Extension Service

Home Vegetable Gardening in Kentucky

Grow smart with SOW: Kentucky gardeners' ultimate app for planting success! Visit the Google Play Store or App Store to download the SOW app. Contact Clay County Cooperative Extension for more information on home gardening or to pick up a paper copy of Home Vegetable Gardening in Kentucky.





**Thomas Lunsford
Shared Use
Equipment
Caretaker
(606) 681-6799**



The shared-use equipment is located in the Burning Springs Community. You **MUST** call Thomas to check on availability and to rent.

Equipment **MUST** be cleaned before returning. If not a \$50 cleaning fee will be charged. If not paid, you forfeit your right to any future equipment rentals.

Equipment rental is \$50 per day for each piece of equipment in Tier 1 and \$30 per day for each piece of equipment in Tier 2.

Tier 1: 6 Ton Lime Spreader, 2 Row Corn Planter, 4 Row Corn Planter, Anderson Bale Wrapper, Pasture Pleaser-Pasture Renovator/Tye Drill, New Holland 185 Manure, New Holland 145 Manure Spreader, Great Plains No Till Drill, and John Deere Drill.

Tier 2: Post Driver, Aerway Pasture Aerator, Low Profile Sprayer, Weed Wipe, Corn Sheller, Chain Drag Harrow, and Vegetable Transplanter w/Mulch Layer & Lifter. We also have a 6'10" X 18' lowboy trailer to haul the vegetable transplanter with mulch layer & lifter.

The Shared Use Equipment Program is supported by the Clay County Agriculture Development Council, Clay County Farm Bureau and the Clay County Conservation District.



4-H Events



Get Involved in 4-H!

Alissa Ackerman

Alissa Ackerman
Co. Extension Agent for 4-H/Youth
Development Ed.

Email: alissa.ackerman@uky.edu

4-H Photography Day Camp



Join us for 4-H Photography Camp on May 22nd and June 4th at 11:00 AM. We will meet at the Clay County Extension Office on both days and travel to various locations for photo opportunities! Photos will be entered in the 4-H Project Showcase July 18th, and grand champ winners will have the opportunity to enter photos in the KY State Fair! Cameras and photos will be due back by July 8th.



4-H Art Club

If you enjoy being creative or need another way to escape, join the 4-H Art Club! Our summer club meetings will be held on May 21st, June 18th, & July 16th at 2:00 PM at the Clay County Extension Office. You must call to register in order for us to prep for supplies. FREE & open to ages 9-18.



4-H Homeschool Club

If you are a homeschooler, we would love to have you join this club! We focus on a variety of topics and travel to new places to enhance our knowledge in many different areas! Our next club meetings are scheduled for May 16th & June 24. You must be homeschooled to participate. FREE & open to ages 9-18. Please call 598-2789 to register.

4-H Camp Reminders!

Remember to return your camp applications and \$35 registration fee in ASAP! The deadline is June 3rd. Families will receive more paperwork in the mail regarding camp information. Parents and campers that have never attended 4-H Camp are required to attend one of the following orientation dates (July 10th at 12:00PM or July 16th at 3:30PM at the Clay County EXCEL Building).

4-H Cooking Club

Join us as we make a variety of summer and KY State Fair recipes this summer! We will be meeting on May 20th and June 25th at 2:00 PM at the Clay County Extension Office. FREE & open to ages 9-18 and you must call to register.



4-H Paint Day

Our next 4-H Paint Day is June 6th at 2:00 PM at the Clay County EXCEL Building. This is a time for parents/guardians to paint with their child (age 8-18). If younger, the child is required to have adult supervision. You must call to register by June 3rd! This event is free.



4-H NRESci

Don't forget if you are currently in the 5th grade, the deadline to apply for the program is May 1st! Those currently in the program, our next event is May 21st at Raven Run. More information will be mailed at a later date.

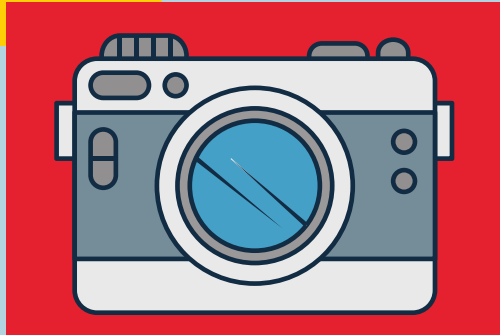
Let's Garden!

Join us for 2 days of educational gardening activities and fun! We will have two special guests presenting information on pollinators and gardening tips on June 26th and June 28th at 1:00 PM each day at the Clay County Extension Office. Free & open to youth ages 9-18.



4-H Photography Day Camp

Age 9-18



MAY 22ND
JUNE 4TH



11:00AM
Clay County Extension Office

JOIN US FOR 4-H PHOTOGRAPHY CAMP ON MAY 22ND AND JUNE 4TH AT 11:00A.M. WE WILL MEET AT THE CLAY COUNTY EXTENSION OFFICE ON BOTH DAYS AND TRAVEL TO VARIOUS LOCATIONS FOR PHOTO OPPORTUNITIES! PHOTOS WILL BE ENTERED IN THE 4-H PROJECT SHOWCASE JULY 18TH, AND GRAND CHAMP WINNERS WILL HAVE THE OPPORTUNITY TO ENTER PHOTOS IN THE KY STATE FAIR! CAMERAS AND PHOTOS WILL BE DUE BACK BY JULY 8TH.

You must call 598-2789 to register !



4-H Paint Day

June 6th

Clay County EXCEL Building

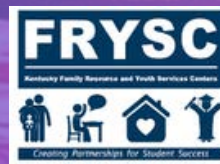
2:00PM

Parent + Child Event

(Age 8-18)

You must call to register at 598-2789!

 Cooperative
Extension Service



June 26th & 28th

Let's
Garden!

1:00 PM


Clay County Extension Office



Join us for educational gardening activities & fun!
Age: 9-18 (if younger, a parent must be present)



4-H Project Showcase

 Cooperative Extension Service

July 15th - 16th

(8:00 AM - 4:00 PM)

Clay County Extension Office

FREE & open to all youth ages 9-18

Want to show off your talents? Enter items for 4-H Project Day! Items include photography, crafts, woodworking, foods, sewing, geology and much more! Projects will be judged and participants will receive ribbons. Those receiving Grand Champion will be eligible to enter items for Kentucky State Fair.

Call 598-2789 to receive a packet of ideas and to register! You can also check out the Kentucky State Fair Catalog at <https://clay.ca.uky.edu/4h-youth-development> to view all categories and rules for entering.



**All projects will be judged and on display to the public:
July 18th from 12:00 PM - 4:00 PM
Clay County Extension Office**

Cooperative Extension Service

Agriculture and Natural Resources
Family and Consumer Sciences
4-H Youth Development
Community and Economic Development

MARTIN-GATTON COLLEGE OF AGRICULTURE, FOOD AND ENVIRONMENT

Educational programs of Kentucky Cooperative Extension serve all people regardless of economic or social status and will not discriminate on the basis of race, color, ethnic origin, national origin, creed, religion, political belief, sex, sexual orientation, gender identity, gender expression, pregnancy, marital status, genetic information, age, veteran status, physical or mental disability or reprisal or retaliation for prior civil rights activity. Reasonable accommodation of disability may be available with prior notice. Program information may be made available in languages other than English. University of Kentucky, Kentucky State University, U.S. Department of Agriculture, and Kentucky Counties, Cooperating. Lexington, KY 40506



Disabilities accommodated with prior notification.



“UNDER THE BIG TOP,”

4-H SUMMER CAMP 2024



**Applications are now available!
You can pick one up at the Clay
County Extension Office or
click on the link below:
[https://clay.ca.uky.edu/4h-
camp](https://clay.ca.uky.edu/4h-camp)**

**July 30-
Aug. 2, 2024**

**Cooperative
Extension Service**

Agriculture and Natural Resources
Family and Consumer Sciences
4-H Youth Development
Community and Economic Development

MARTIN-GATTON COLLEGE OF AGRICULTURE, FOOD AND ENVIRONMENT

Educational programs of Kentucky Cooperative Extension serve all people regardless of economic or social status and will not discriminate on the basis of race, color, ethnic origin, national origin, creed, religion, political belief, sex, sexual orientation, gender identity, gender expression, pregnancy, marital status, genetic information, age, veteran status, physical or mental disability or reprisal or retaliation for prior civil rights activity. Reasonable accommodation of disability may be available with prior notice. Program information may be made available in languages other than English. University of Kentucky, Kentucky State University, U.S. Department of Agriculture, and Kentucky Counties, Cooperating. Lexington, KY 40506



 Disabilities
accommodated
with prior notification.

4-H Club Activities

4-H Cooking Club

At this month's 4-H Cooking Club meeting, we learned how to make a delicious fruit salad and an omelet!



4-H School Clubs

Our 4-H School clubs learned about the 3 R's this month--- reduce, reuse and recycle! They also enjoyed a composting activity and treat!

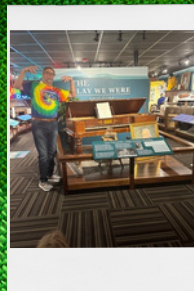
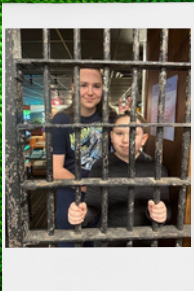


4-H Earth Day Photo Contest Winner

Congratulations to our 2024 4-H Earth Day Photo Contest Winner, Korbyn Knuckles! Korbyn captured this beautiful photo of a Dahlia that he had planted with his family.

4-H Homeschool Club

Our 4-H Homeschool Club members visited the Clay County Historical Society! We would like to thank Mike White for giving us a great tour!



Learn to Navigate the Internet in this **TWO DAY DIGITAL NAVIGATOR WORKSHOP**

This is a free, 2 session class open to anyone that would like to learn more about navigating the internet!

Thursday, May 30th: 9:00 a.m.-12:00 p.m. &
Friday, May 31st: 9:00 a.m.-12:00 p.m.

Please call Clay County Cooperative
Extension at 598-2789 to register!

FREE!



This training is offered with



- *Ideal for those new to navigating the internet, rejoining the workforce, and/or previously incarcerated.*
- *Connect to online resources*
- *Complete online tasks*
- *Learn to access free or low-cost internet and devices*

**Cooperative
Extension Service**

Agriculture and Natural Resources
Family and Consumer Sciences
4-H Youth Development
Community and Economic Development

MARTIN-GATTON COLLEGE OF AGRICULTURE, FOOD AND ENVIRONMENT

Educational programs of Kentucky Cooperative Extension serve all people regardless of economic or social status and will not discriminate on the basis of race, color, ethnic origin, national origin, creed, religion, political belief, sex, sexual orientation, gender identity, gender expression, pregnancy, marital status, genetic information, age, veteran status, physical or mental disability or reprisal or retaliation for prior civil rights activity. Reasonable accommodation of disability may be available with prior notice. Program information may be made available in languages other than English. University of Kentucky, Kentucky State University, U.S. Department of Agriculture, and Kentucky Counties, Cooperating.

Lexington, KY 40506



Disabilities
accommodated
with prior notification.

RETURN SERVICE REQUESTED

Crunchy Fruit and Chicken Salad

Servings: 6

Serving Size: 1 cup

Ingredients:

- 2 cups chicken, cooked and diced
- 2 apples, diced
- 1 cup pineapple chunks, drained
- ½ cup celery, diced
- ¼ cup vanilla or plain yogurt
- ¼ cup chopped nuts, optional

Directions:

1. Mix all ingredients and chill for at least one hour.
Serve cold.
2. Garnish with raisins if desired.

Make it a Meal

- Crunchy Fruit and Chicken Salad
- Fresh Greens
- Carrot sticks
- Whole grain crackers
- Low-fat milk



Nutrition Facts Per Serving: 130 calories; 2g total fat; 0.5g saturated fat; 0g trans fat; 40mg cholesterol; 45mg sodium; 14g carbohydrate; 2g fiber; 15g protein; 2% Daily Value of vitamin A; 10% Daily Value of vitamin C; 4% Daily Value of calcium; 4% Daily Value of iron

Source: Rita May, Senior Extension Associate, Nutrition Education Program, UK Cooperative Extension Service